

Officers, voting members elected at convention

Vickie Donnell, president

Among all the fun of a convention, there always is business to conduct. The session began 9 a.m. Saturday with the report from the credentials committee. Registrations, at that time, were a total attendance of 67 which included 28 voting members, 34 other participants and five guests.

Attention was given to the standing rules and adoption of the convention program booklet. The session was in the good hands of our convention committees led by Carolyn Malcolm, Gaye Mizell, Carolyn Olson, Becky Verslues, Kara Jecha, Nancy Evans, Carolyn Bauer and Alice Burnett. Thank you, ladies!

An election was held to fill the vice-president, secretary and two board member positions. We are thankful to the women that re-



CSS W/ELCA 2022-23 Board: Vickie Donnell, Gaye Mizell, Susie Borgstrom, Pat Dunavan, Kathy Steinke, Rev. Dinah Dutta, Janice Gerken, Jill Duis. Not pictured Kathy Regehr.

sponded with ‘yes’ when asked to have their name placed on the ballot. Kathy Steinke was elected vice-president, Susie Borgstrom will fill the position of secretary, and board members elected were Jill Duis and Gaye Mizell.

Four voting members with alternates were elected to represent our synodical organization at the 12th Triennial Convention and Gathering in September 2023.

(Continued on page 2)

On the Inside

- Triennial voting members.....Page 2
- Triennial datesPage 2
- God walks with us
- Kim Knowle-ZellerPage 3
- We are blessed
- Janice Gerken.....Page 4
- LWR Quilt pickup.....Page 4
- Clusters re-organized
- Pat DunavanPage 5
- Dedicated board member.....Page 5
- Katie’s fund
- Rhonda TemplingPage 6
- Scholarship winnersPage 6
- Meet new board membersPage 7
- 2022 Convention photos 8-9
- Triennial gathering scholarship application.....Page 10
- Board members
- Contact informationPage 11
- Subscription form.....Page 12

Faith-filled reunion is a success

Kathy Steinke, vice-president

Gathered together, the Women of the ELCA celebrated hope, friendship, and commitment to Christ in one faith-filled reunion in Kansas City in July. At the 34th CSS W/ELCA convention in Overland Park, the theme “Rejoice in Hope” was successfully woven throughout the weekend beginning with the enlightening keynote message by Rev. Kimberly Knowles-Zeller on Friday evening.

Opening worship was Holden Evening Prayer led by Bishop Susan Canda. Hymns included “My Hope Is Built on Nothing Less”, “Lord, Listen to Your Children Praying”, and “Rejoice in the Lord Always.” Bishop Canda reversed Romans 12:12 with ‘persevere in prayer, be patient in suffering and rejoice in hope.

Rev. Stephen Zeller, pastor at St. Paul’s Lutheran Church, Cole Camp, MO, spoke about “Finding Your Sabbath”. He instructed us to purposely take time away from life’s demands so we may use that time and

(Continued on page 3)

Officers elected

(Continued from page 1)

The voting members are: Rev Dinah Dutta, Louise Ahrens, Jill Duis and Rhonda Schlesselman. Alternates will be Susie Borgstrom, Rhonda Templing, Rev Ann Lundquist, Jean Bardy and Carolyn Olson.

Janice Gerken, treasurer, presented the financial report for the fiscal year that ended Jan. 31, 2022. Total revenue was \$30,723.63 with total expenses of \$14,535.58. There were fewer expenses because the 2021 convention was held virtually.

A budget of \$29,000-plus was approved for the 2023 fiscal year. The offerings received at the convention were again most generous and are listed in Janice Gerken's report on page 4.

Our Reference and Counsel Committee led by Kara Jecha took us through the business of adoption of six resolutions. The first was: **Structure of the Central States Synodical Organization of the Women of the ELCA**. This was a noteworthy adop-



The "Rejoice in Hope" banner was designed by Amy Maier, daughter of Kathy Steinke.

The banner seamstress was Pat Lindquist, Messiah Lutheran Church, Springfield, MO. It was beautiful!!



2023 Triennial voting members and alternates: Jean Bardy, Vickie Donnell, Rhonda Schlesselman, Susie Borgstrom, Rhonda Templing, Rev. Dinah Dutta and Jill Duis. Not pictured: Louise Ahrens, Rev. Ann Rundquist and Carolyn Olson.

tion as it called for our synodical organization to reorganize into five clusters rather than the 19-cluster structure that has been in place since their inception in 1987. The board spent the past year doing extensive discovery work collecting information that supported the resolution.

The second resolution adopted was **Calling for Social Justice** where we committed to address equal justice under the law. In the third, **Calling for Care of Creation**, we committed to serve as advocates for climate care within our own congregations.

Those Who Have Faithfully Served were honored in the fourth resolution. The fifth resolution was a **Calling for Peace and Unity** and the final resolution adopted was **Acknowledgement of Appreciation**.

Thanks to all who over the past year contributed to the business of our synodical organization. A special thanks to those who took the time to write and submit our most meaningful resolutions. The full narrative of the resolutions can be found in the minutes of the convention at

[ed9008_97302458ab0841b7a0783be27bbe4dfc.pdf \(css-elca.org\)](https://www.elca.org/~/media/ELCA/2023-Triennial-Convention/minutes/2023-Triennial-Convention-Minutes-9-21-2022.pdf)

vickiedonnell@yahoo.com

Make Plans to Attend

12th Triennial Convention

September 19-21, 2023

2023 Triennial Gathering

September 21-24, 2023

**Sheraton Phoenix Downtown
Phoenix, Arizona**

God walks with us when we are afraid

Rev. Kim Knowle-Zeller

What a gift to gather in July to rejoice in hope! I continue to give thanks for our time worshiping, sharing, and learning together. I give thanks for you - for your faith, your hope, your lives, and your love. Since then, I have sent my second grader back to school. We finished the pool season and took our last dives and jumps. We went camping. I penned the final devotion for my upcoming book. I prayed, hoped, and worried; and, prayed some more. I remember you - your faith and the gift of your presence.

Faith-filled reunion

(Continued from page 1)

energy to unplug, explore, and pray. Then, he said, we will be filled with renewed purpose and hope.

Nancy Nagel, a member of Peace Lutheran Church, Washington, MO, shared her church's efforts to provide medical debt relief for individuals in need.

In the "Strengthening Families" session, Megan Clark, Prevention Coordinator for Johnston County Mental Health Center, shared how her organization provides hope to at-risk youth and their families through strategies and expectations like regular meals shared around a table to encourage better communication.

Kimberly Paul, *Safehome* Director of Community Programs, shared her experience working with survivors of domestic violence who now have hope for a safe, happier future. *Safehome* was the recipient of in-kind donations that included 82 fully stuffed backpacks for children, with an additional 66 books, 45 flashlights, 105 toothbrushes, 12 tubes of toothpaste, 64 fleece blankets and 163 stuffed animals. Women signed cards of encouragement tucked into the backpacks. Many thanks for the donations! Faith in action creates hope.

Lori Garcia, CWO Executive Board Member, attended our convention and offered greetings from churchwide, guidance during meetings and led a thoughtful Bible study/devotion based on Romans 12:12. Lori enjoyed our warm Midwest hospitality!

Fun on Saturday night followed a delicious meal and lively entertainment provided by *Vocal Ease*.

Sunday morning Holy Communion service was officiated by CSS Board members Pastor Jill Duis and Rev. Dinah Dutta. Pastor Jill preached eloquently about putting our hope in the everlasting grace and love of Christ. Beautiful music by harpist RoJean Loucks enhanced worship.

The weekend filled attendees with reminders that God is ever present and gives us hope in times of trial through prayer and love.

Thank you to those who travelled to join to "Rejoice in Hope" and share the love of God in Christ Jesus.

Kathysteinke81@gmail.com

I wonder if you have had a chance to jump scared since we last saw one another? Has there been an experience in your life where you felt unqualified and afraid to move forward? Did you wonder if you had the gifts to do what was before you? Did you question your worth? Would you rather have stayed safe in your home than venturing into the world? Do you have an upcoming medical test, or are you starting a new venture? Is there a relationship in need of healing? The world demands so much of us. Even just in these last few weeks, I have jump scared. And perhaps, I am not alone.

I remember my daughter jumping from the high dive and trust that I, too, can jump and will be caught. God meets us in these moments of fear and uncertainty. God walks with us wherever life takes us. We are not alone. Whatever is before you, and however you are feeling, may you know the One who sees you and walks with you. May you know the love of God who called you by name and delights in you, just as you are. May you give your fear to Jesus who is there to catch you.

Women of Missouri and Kansas, you know when to jump and when to be there to catch your friends. You know that sometimes being scared and stepping forward reluctantly is the only way to go. You know you need God's living water for yourself so you can offer that same life-giving water to others. You know that God has called and equipped you for just a time as this, in joy and lament, in suffering and healing, in doubt and prayer.

You know that you are not alone. For we know how to rejoice, to grieve alongside one another, and to pray.

We are women. Thanks be to God.

I would love to stay connected with you. Every month I send a newsletter with a short devotion/reflection from me along with a few of my favorite things from online. It is my privilege to show up in your in-boxes month after month. You also will be informed when my book is available as well my writing or speaking engagements. I am grateful to connect with readers and share stories!

[Sign up for my monthly newsletter, Walk and Talk](#), and receive a free, downloadable resource: Walk and Talk with God: Reflection, Scripture references, and a how-to for your own contemplative walk. With gratitude.

Kim Knowle-Zeller

Kimberlyknowlezeller.com

pastorkimkz@gmail.com

(Editor's note: Pastor Kim was the keynote speaker at Friday evening's gathering. She lives with her husband, Rev. Stephen Zeller and their two daughters in Cole Camp, MO. Her articles have been published the *GATHER* magazine, *Living Lutheran*, *Christ in Our Home* devotional book and the Lenten booklet, *Grace Unbounded*.)

We are blessed to be a blessing

Janice Gerken, treasurer

In Genesis 12, God tells Abraham he will be blessed so that he may be a blessing to all. In sharing with you the convention offerings' update, we as bold and generous women have been "blessed to be a blessing" to others.

The Love Offering collected on Friday evening at our opening worship service totaled \$2,031. This offering was divided among three organizations/agencies:

- 50% to our Churchwide Organization - \$1,015
- 25% to Strengthening Families - \$507.75
- 25% to RIP Medical - \$507.75

The offering collected at the closing worship service on Sunday morning totaled \$945.

- 50% to our Education Scholarship Fund - \$472.50
- 50% to CSS Women of the ELCA - \$472 (used to defray convention expenses)

Safehome was designated as the recipient of our in-kind donations and offerings. *Safehome* is an agency in Overland Park, which provides shelter for victims of domestic violence, counseling, and court and legal assistance. The tangible donations to *Safehome* included



GIVING AND SHARING

Love offering	\$2,031
Silent auction.....	\$1,145
Little raffle.....	\$551
Sunday worship	\$945
TOTAL offerings	\$7,842

SAFEHOUSE donations

Filled backpacks.....	82
Leftovers given to organization	
Blankets	64
Books	66
Flashlights	45
Stuffed animals.....	163
Toothbrushes.....	105
Tubes of toothpaste.....	12

blankets, stuffed animals, books, toothbrushes/toothpaste, and flashlights, for an estimated total of \$2,545. In addition, in-kind checks from both units and individuals totaled \$625.

The ladies had great fun and excitement in participating in the "Little Raffle" Baskets and the Barbara Nelson Silent Auction. The donations for the "Little Raffle" totaled \$551; while the Silent Auction donations totaled \$1,145.

Monies from the "Little Raffle" were added to the Education Scholarship Fund which raised the fund's balance to \$2,259.89 (which was deposited in a savings account).

Monies from the "Silent Auction" were added to the Barbara Nelson Triennial Scholarship Fund which raised the fund to \$16,514 (invested with Mission Investment). The fund provides scholarships to help pay registration costs for qualifying applicants to attend a triennial convention.

Total giving for the 34th CSS W/ELCA convention was \$7,842.

The Central States Synod Women of the ELCA have indeed been "blessed to be a blessing"! Thanks be to God!

janicegerken@aol.com

NOTICE:

A truck going through Kansas will pick up LWR quilts and kits. When we dropped off quilts last year, we were told this was over. However, Marty Ryan and Rosie Harder have organized pick up points for this year. Those are:

Tues., November 1, 9 a.m. to 12 p.m. (noon), Christ Lutheran, 5356 N. Hillside St., Wichita, KS.

Wed., November 2, 9 a.m. to 12 p.m. (noon), Trinity Lutheran Church, 2703 Fort St., Hays, KS.

Thurs., November 3, 9 am to 12 p.m. (noon), St. John's Lutheran Church, 302 S. 7th St., Salina, KS.

Thank you, ladies, for putting this together.

rtemp@russellks.net

A reminder... Send all offerings to:

Janice Gerken, Treasurer
36282 Renken Road
Mora, MO 65345

A new day, a new way

W/ELCA clusters reorganized; reduced to five

Pat Dunavan, cluster coordinator liaison

The 2022 Central States WELCA convention is over. Those who attended came away with new energy and hope for the future of our organization. As with any convention, the business meeting was an integral part of the activities. Resolutions were introduced and voted upon. One of the more significant changes occurred with the passage of Resolution No. 1 during the business meeting. (To see the full resolution, review the convention minutes on the website at <https://www.css-elca.org/welca>.)

This resolution changes how we are organized as clusters. Using the same geographic boundaries as the Central States Synod conference areas, we now have five clusters rather than 19. Those are: Eastern Missouri, Osage, Border, Central Kansas, and Western Kansas clusters.

The resolution provides for a transition in CSS W/ELCA gatherings and conventions. An annual synodical convention will be held in the odd-numbered years. At least one cluster event will be held in each cluster in the even-numbered years. Each cluster will have multiple coordinators who will work together to plan the cluster events.

So where do we go from here? Over the next few months, the CSS W/ELCA board will make plans to meet with each of the new clusters and

CSS W/ELCA SYNOD CLUSTERS

Eastern Missouri

Osage

Border

Central Kansas

Western Kansas

their coordinators. One or more board members will be assigned to work with a cluster. We hope to have in-person meetings with coordinators and congregational units to determine how the board can encourage and expand the number of active congregational and inter-congregational units in each cluster.

Within each cluster, the coordinators and their board contact will work together to plan for upcoming cluster events to be held in 2024. At the 2023 WELCA convention, we hope there will be an opportunity for cluster attendees to meet and possibly share ideas and plans.

It will take some time for this new way of doing business as clusters and congregational units to feel comfortable. But it is our hope that this reorganization will energize and renew our women to more fully participate in the work of the Women of the ELCA for years to come. prairies@aol.com

Dedicated board member grateful for friendships made



Last month's election of a new vice-president closed a chapter in the life of Beth Rockelman. For many years, Rockelman has been an integral part of the CSS W/ELCA board. She was elected vice-president in 2018 for a two-year term. She served an

additional year (2020) due to COVID-19. She was re-elected vice president for one more year in

September 2021. She previously also served two terms as board secretary and has attended several churchwide conventions as a voting member.

Rockelman, Jefferson City, MO, said it has been a privilege to serve on the board and she has been blessed by the friendships she has made.

"The pleasure I have had becoming acquainted with so many of you...is truly immense. Thank you for your kindness, love, friendship, and generosity toward me. Let us rejoice in hope for a great future with W/ELCA always."

Make a pledge to the 2122 Katie's Fund Campaign

Rhonda Templing, historian

Earlier this summer Women of the ELCA launched a major campaign to raise \$2 million for the Katharina von Bora Luther Endowment Fund, lovingly known as Katie's Fund. The churchwide executive board, as financial stewards of Women of the ELCA, recognizes that it is time to grow the principal of this endowment so that today's participants ensure that a women's ministry organization continues in the future. Because we will be contributing to the next 100 years of women's ministry when we support Katie's Fund, the campaign is named 2122.

By expanding Katie's fund by \$1 million through this new campaign, Women of the ELCA may

continue to multiply the reach and impact of women's leadership and ministry in the church.

Katie's Fund supports ministry in three areas: leadership development, global connections, and living theology.

The churchwide executive board members and staff, along with members of the Core and Leadership Teams of the campaign have pledged their financial support to 2122.

Now it is your turn. You may make a pledge payable over three years or you may make a one-time gift to the campaign. Estate gifts, appreciated assets, gifts of stock and cash are all ways in which a gift may be made to the campaign. We realize eve-

ryone's gift will be different, some will be able to make a gift of \$50, but some will be able to make a gift of \$10,000.

Why would you want to support Katie's Fund? Women of the ELCA impacts and changes women's lives every day. I know it did mine. I am sure many of you have stories to tell about how it changed yours.

You may go the Women of the ELCA website for more information or you may contact me, if you would like to be part of this campaign. Contributing to this campaign is a wonderful way to honor the role Women of the ELCA has played in your faith journey. rtemp@russellks.net

Scholarship winners active in communities

Three 2022 high school graduates were awarded scholarships to further their education as college students.

Sapphire Davis, Beloit, KS, is a member of Zion Lutheran Church. She has been a Sunday school teacher and a counselor-in-training at Camp Tomah Shinga. She has been active in Beloit community service projects and is a



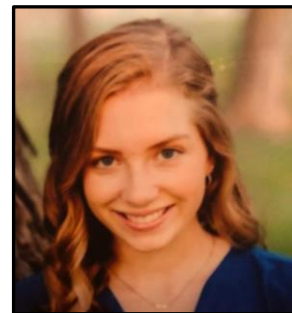
faithful blood donor.

She attends Kansas State University where she is majoring in music composition.

Emma Atcheson, is a graduate of Derby H.S. and a member of Resurrection Lutheran in Haysville, KS. As Rhoer Club president, she mentored girls, ages 12-18 years, to help them develop skills to succeed.



Atcheson attends Creighton University, Omaha, NE. Her major is economics with a focus on finance.



Kelly Parr attends Fort Hays State University and is a member of Trinity Lutheran in Hays, KS. Giving back to community has been a priority for Parr. She helped raise funds for a handicap accessible park. She has assisted with Meals on Wheels and supported Teaming Up for Tots which provides Christmas gifts to less-privileged children.

New board members are eager to serve, ready to help

Elections were held to fill four board positions: vice-president, secretary and two board members. Those were expired terms held by Beth Rockelman, Kathy Steinke, Loretta Holmes and Jill Duis, respectively.

Steinke was elected as vice-president; Susie Borgstrom as secretary; and Gaye Mizell and Jill Duis as board members.



SUSIE BORGSTROM

Borgstrom lives in Windom, KS and is a member of Andover Lutheran Church where she has been an active member for more than 40 years. She has been a member of Women of the ELCA for 25 years. She lives on a farm and has four children, four grandchildren and one great-grandchild.

When her husband, John, passed away last summer, she had to reset her way of thinking. She refused to become part of the “widow club” as she was not ready to retire or sit in the background.

“...I’m still working, still healing, and still doing what I have to do in life.”

Borgstrom is on the church board, chairperson of the Altar committee, W/ELCA treasurer and past cluster coordinator. Recently, her church issued a call to

her daughter, Anna, to be its pastor.

Borgstrom has varied and extensive experience on the CSS W/ELCA board. She previously served as board president, board member, triennial voting member and on several committees.

“I am here to help wherever the Holy Spirit takes me. The peace of the Lord be with you, now and always.”

Mizell lives in St. Louis, MO and has attended Trinity Lutheran Church in Kirkwood, MO. almost her entire life. She is W/ELCA president and serves as a volunteer for Ready Readers, an organization that sends volunteers to read to children from lower income families.

She loves to knit, enjoys making quilts and plays the handbells. “I am looking forward to working on the CSS W/ELCA board to broaden my horizons through involvement in work and activities of the synod.”



The Heartland South Cluster gathered for a retreat July 16 at the home of Bev Elliott, Pittsburg, KS. Due to the reorganization of clusters, Heartland South will be in the Osage Conference.

NOTE: Bold Women’s Sunday has been moved from the last Sunday in February to the first Sunday in March for 2023.

Rejoicing in faith, fellowship and worship





**34th Annual CSS W/ELCA Convention
July 22 – 24, 2022, Overland Park, KS
REJOICE IN HOPE**



REJOICE IN HOPE --- Romans 12:12



BARBARA NELSON TRIENNIAL GATHERING
MEMORIAL SCHOLARSHIP

APPLICATION GUIDELINES

- † Must be a member of an ELCA congregation in the Central States Synod
- † Must never have received a Barbara Nelson Scholarship

Name _____

Address _____

City _____ State _____ Zip _____

Phone Number _____ E-Mail Address _____

Congregation _____ City _____ State _____

On the back of this application write a paragraph of approximately 50 words stating why you would like to attend the 2023 Triennial Gathering planned for September 21-24, 2023.

This scholarship fund was established for scholarships for Central States Synodical Women to attend a Triennial Gathering. Distribution is made in years there is a Triennial Gathering. The amount of funds available for distribution is calculated as follows:

- † The interest accrued during the 3 fiscal years prior to a Gathering
- † 50% of the monies contributed during the 3 fiscal years prior to a Gathering
- † Scholarships will be awarded according to monies available

Recipients will be selected by the Executive Committee of the Central States Synodical Women's Organization Women of the ELCA. Notification will be done in a timely manner following the application deadline.

Applications must be postmarked by December 31, 2022

Send Completed Application to: **Gaye Mizell**
Board Member, Synodical Women's Organization
11870 Spruce Haven Drive
St. Louis, MO 63146

CENTRAL STATE SYNOD WOMEN OF THE ELCA
OFFICERS/BOARD MEMEBERS 2022-2023

President: Vickie Donnell
 4672 E Hidden Oak Place
 Springfield, MO 65802
 Cell: 417-839-8862
vickiedonnell@yahoo.com

Vice President: Kathy Steinke
 10661 Hackamore Lane
 St. Louis, MO 63128
 314-422-2835
kathysteinke81@gmail.com

Secretary: Susie Borgstrom
 265 Eisenhower Road
 Windom, KS 67491
 620-664-3906
Susieborgstrom1957@gmail.com

Treasurer: Janice Gerken
 36282 Renken Road
 Mora, MO 65345
 660-281-7380
janicegerken@aol.com

Board Member: Jill Duis
 12141 West Willow Road
 Odell, NE 68415
 402-239-6991
jduism@yahoo.com

Board Member: Pat Dunavan
 3015 NE Walnut Grove Road
 Topeka, KS 66617
 Ph: 785-246-2123
prairies@aol.com

Board Member: Rev. Dinah Dutta
 1000 Colonial Circle
 Lawrence, KS 66049
 785-979-8362
pastordutta@gmail.com

Board Member: Gaye Mizell
 11870 Spruce Haven Drive
 St. Louis, MO 63146
 314-606-9567
Lovetoknit50@gmail.com

Board Member: Kathy Regehr
 360 7th Avenue
 Inman, KS 67546
 620-242-3159
kathyregehr@hotmail.com

Historian: Rhonda Templing
 234 NW 210 Road
 Hoisington, KS 67544
 620-935-4213
rtemp@russellks.net

WITW Newsletter Editor: Mary Liby
 25680 S Urish Rd
 Osage City, KS 66523
 Ph: 785-528-3434
 Cell: 785-817-3942
lmfarms72@gmail.com

Central States Women NEW website
www.css-elca.org/welca
 Central States Women Facebook:
www.facebook.com/CSSwomenofeca
 (this is not a typo—it is eca)
 All are secure websites



***No eye has seen, no ear has heard,
 no mind has conceived what
 God has prepared for those who love him.***

1 Corinthians 2:9

Official Newsletter of
The Central States
Women of the ELCA

WALKING IN THE WORD
The newsletter written and published by the
Central States Synod Women of the ELCA

Keep up-to-date with events, news, etc. concerning the CSS W/ELCA

Subscriptions are **FREE** and available by email alert or USPS mail. Please send your subscription requests to Mary Liby, 25680 S. Urish Rd., Osage City, KS 66523-9014, or lmlfarms72@gmail.com

NAME _____

ADDRESS _____ PHONE _____

CITY _____ STATE _____

ZIP _____ EMAIL _____ DATE _____

I prefer to receive *Walking in the Word* by: EMAIL _____ USPS _____



Official Newsletter of
The Central States
Women of the ELCA
25680 S URISH ROAD
OSAGE CITY, KS 66523-9014